

Made in Switzerland
瑞士製造



FOLDING DOORS

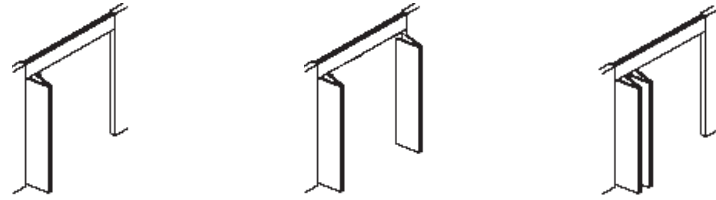


HAW-FURN02 / HAW-FURN02A / HAW-FURN02AA

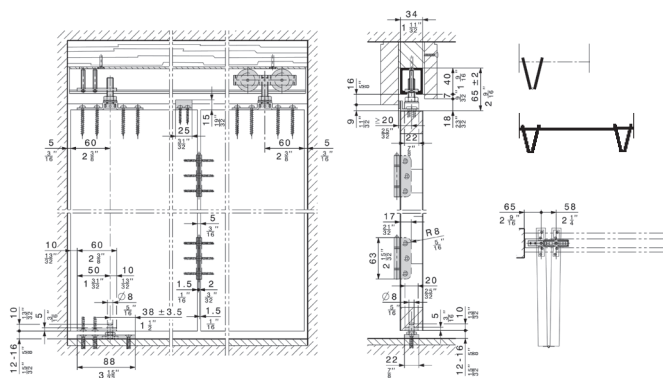
HAWA-Bifold 30 hardware system for folding a pair or 2 pairs of wooden partition doors

HAWA-Bifold 30一對或兩對側置摺疊木質隔間門五金配件

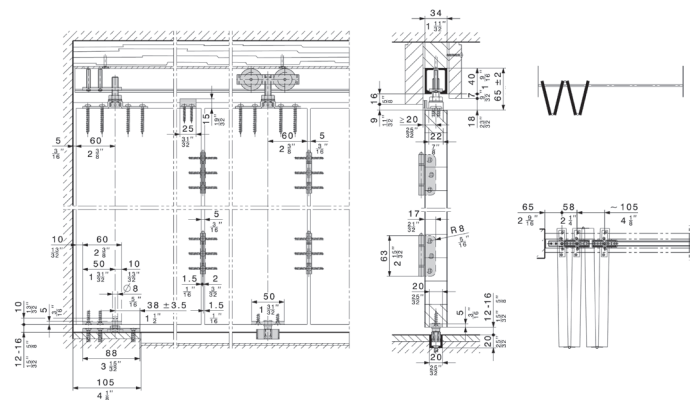
Max. door weight 門承重 : 40 kg - Single pair of panels 單摺疊門 (每扇門計)
30 kg - 2 pairs of panels 雙摺疊門 (每扇門計)
Max. door width 門最大寬度 : 600 mm
Door thickness 門厚度 : 26-45 mm



	HAW-FURN02	HAW-FURN02A	HAW-FURN02AA
Each set comprising 每套包括配件:	For 1 set of 2-flap folding doors 一組單摺疊門(即兩扇門板)適用	For 2 sets of 2-flap folding doors 兩組單摺疊門(即四扇門板)適用	For 1 set of 4-flap folding doors 一組雙摺疊門(即四扇門板)適用
Top track, alu plain anodized, predrilled 鋁質頂路軌	1 pc (1200 mm)	1 pc (2500 mm)	1 pc (2500 mm)
2-wheeled trolley, M10, with plastic wheels 由兩個塑料輪子組成的滾輪	1 pc	2 pcs	2 pcs
Top fixing plate with hanger bolt M10 and fixing screws 滾輪固定吊片連吊掛螺栓及螺絲	2 pcs	4 pcs	3 pcs
Top pivot, M10 頂雞咀鉸	1 pc	2 pcs	1 pc
Bottom pivot, M8 底雞咀鉸	1 pc	2 pcs	1 pc
Vertical adjustment pin 垂直調較針	1 pc	2 pcs	1 pc
Hinge with sliding bearing plastic 中間鉸	3 pc	6 pcs	9 pcs
Stop bracket 尾掣碼	1 pc	2 pcs	2 pcs
Guide plate with rattle proof guide piece 地面導向片	-	-	2 pcs



Installation guide for HAW-FURN02 & HAW-FURN02A
單摺疊門安裝方法



Installation guide for HAW-FURN02AA
雙摺疊門安裝方法

For indent order only 只供訂貨

Made in Switzerland
瑞士製造



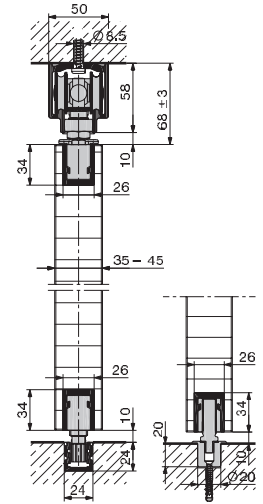
FOLDING DOORS



HAWA-Variofold 80/H hardware system for large partition walls with wooden panels and with a bottom guide channel

HAWA-Variofold 80/H 大型摺疊木質隔間門五金配件，需安裝定向底路軌

- Track length 路軌長度 : 6000 mm
- Max. door weight 門承重 : 80 kg (每扇門計)
- Door width 門寬度 : 500-900 mm
- Door thickness 門厚度 : 35-45 mm
- Height adjustable 垂直調較 : +/-3 mm
- Internal opening width 內部開啟寬度:
- One-sided installation up to 6 m 單向系統 6 m
- Two-sided installation up to 12 m 雙向系統 12 m



HAW-ARCH09A

Basic set with pivot bearing and guide
基礎門扇五金配件套裝，連頂軸和底路軌
導向塊



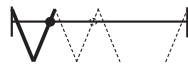
HAW-ARCH09C

Pivot door set for installation with
bottom guide channel 適用帶底路軌的
平開門五金套裝



HAW-ARCH09A/NG

Basic set with pivot bearing without
guide 基礎門扇五金配件套裝，連頂軸，
底路軌導向塊不包括在內



HAW-ARCH09C/NG

Pivot door set for installation without
bottom guide channel 適用不帶底路軌
的平開門五金套裝



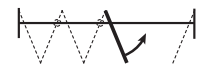
HAW-ARCH09B

Additional set with guide 附加門扇五金
套裝，連底路軌導向塊



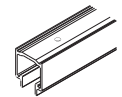
HAW-ARCH09D

Pivot door set to be folded stack
(without trolley and top pivot bearing)
安裝在摺疊門上的平開門五金套裝，滾輪
和頂軸不包括在內



HAW-ARCH09E

Top track alu, plain anodized,
predrilled, 6m 6米長鋁質頂路軌



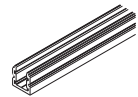
HAW-ARCH09G

Stainless steel hinge with heavy load
bearings, incl. fixing screws 重磅不銹鋼
中間鉸連固定螺絲



HAW-ARCH09F

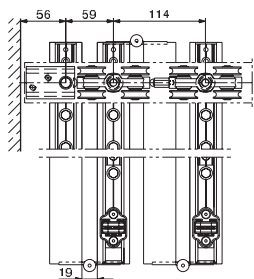
Bottom guide channel alu, plain
anodized, 6 m 6米長鋁質底路軌



Panel height 門板高度
≤2500 mm = 2 pcs
Panel height 門板高度
≤3500 mm = 3 pcs

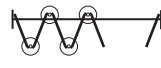
HAW-ARCH09H

Hollow seal, rubber black, 10 m/roll
摺疊門用防走光黑色膠封條，10 米長/卷

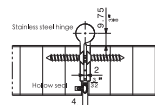


Folding panel stack
stores compactly and
needs little space
摺疊門所需停泊空間
不大

Hollow seal position
防走光封條位置



Hinge position
門鉸位置



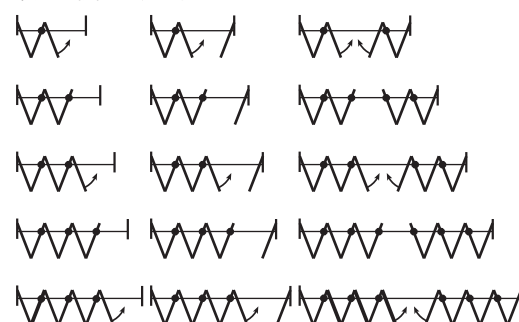
Note: HAWA-Variofold 80/H requires a bottom guide channel,
except for 2 or 2+2 panel installations
注意：除門扇數量為2或2+2的情況外，HAWA-Variofold 系列必須
安裝地面導向軌

Installation examples 安裝組合例子

Installations with or without a bottom guide channel
帶或不帶底路軌的安裝組合



Installations with a bottom guide channel
帶底路軌的安裝組合





For indent order only 只供訂貨

Made in Switzerland
瑞士製造

FOLDING DOORS



HAWA-Centerfold 80/H hardware system for large centerfold partition walls with wooden panels and without a bottom guide channel
HAWA-Centerfold 80/H 大型中置摺疊木質隔間門五金配件，無需安裝定向底路軌

Track length 路軌長度	: 6000 mm
Max. door weight 門承重	: 80 kg (每扇門計)
Door width 門寬度	: 500-900 mm
Door thickness 門厚度	: 35-45 mm
Height adjustable 垂直調較	: +/-3 mm

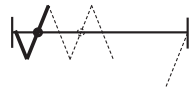
HAW-ARCH07G

Hollow seal, rubber black, 10 m/roll
摺疊門用防走光黑色膠封條，10米長/卷



HAW-ARCH07A

Basic set with pivot bearing without guide 第一(半)扇及第二(全)扇中置摺疊門連樞軸承基本套裝



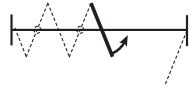
HAW-ARCH07B

Additional set without guide 額外一對中置摺疊門套裝



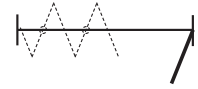
HAW-ARCH07C

Pivot door set to panel stack (without trolley and top pivot bearing) 位於摺疊門一側的單扇平開門套裝 (不包括滑輪及頂置樞軸承)



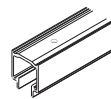
HAW-ARCH07D

Pivot door set at the opposing end for installation without bottom guide channel 位於門洞一側的單扇平開門套裝 (不需安裝導向底路軌)



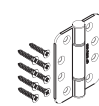
HAW-ARCH07E

Top track alu, plain anodized, predrilled, 6 m 6米長鋁質頂路軌



HAW-ARCH07F

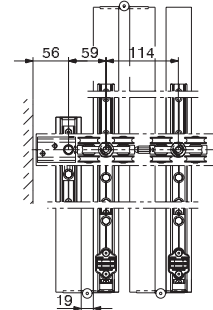
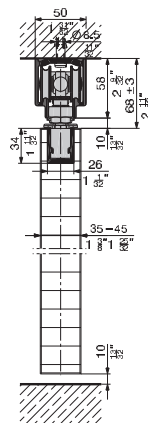
Hinge stainless steel with heavy load bearings, incl. fixing screws 重磅不銹鋼中間鉸連固定螺絲



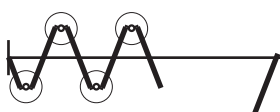
Panel height 門板高度 ≤2500 mm = 2 pcs

Panel height 門板高度 ≥3500 mm = 3 pcs

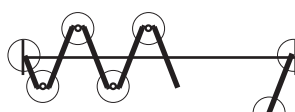
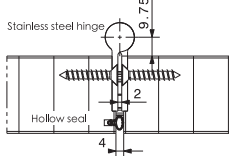
Each set comprising 每套包括配件:	HAW-ARCH07A	HAW-ARCH07B	HAW-ARCH07C	HAW-ARCH07D
Top pivot bearing 頂樞軸承	1 pc	-	-	1 pc
Folding-/pivot door catch, adjustable 摺疊/平開門門檔	1 pc	1 pc	1 pc	1 pc
4-wheeled trolley, M10, and suspension plate 滾輪及吊片	1 set	-	-	-
4-wheeled trolley, M10, suspension plate and spacer 滾輪連吊片及間隔器	-	1 set	-	-
Suspension profile alu, 208 mm 208 mm長鋁質懸掛槽	2 pcs	-	1 pc	3 pcs
Suspension profile alu, 550 mm 550 mm長鋁質懸掛槽	1 pc	1 pc	-	-
Thrust bearing sleeve, incl. driver 推動軸套管連驅動器	1 set	-	-	1 set
Cover cap for top fixed suspension 頂修懸掛槽用的蓋子	3 pcs	1 pc	1 pc	3 pcs
Vertical adjustment key 垂直調較匙	1 pc	-	-	-
Suspension assembly locking wrench 扳鉗	1 pc	-	-	-
Fork spanner 叉形扳手	1 pc	-	-	-



Folding panel stack stores compactly and needs little space
摺疊門所需停泊空間不大



Hinge position 門鉸位置



Hollow seal position 防走光封條位置



Flush partition walls with flexible folding.

Hardware system for large wooden folding walls with panel weighing up to 80 kg (176 lbs.).

Description

Hawa Variifold 80 H is a hardware system for wooden folding walls with up to 80 kg (176lbs.) heavy panels. Installations are simple to plan, and quick to assemble. A pivot bearing secures the first panel in the set; the others line by means of elegant, stainless steel hinges that bring the panels closer together and minimise panel stacking space requirements. The panel set and the opposing end may also have a pivot door fitted. Attached to every other panel is a folding-/pivot door catch with an integrated, individually adjustable retainer, to hold the folding wall flush when closed.

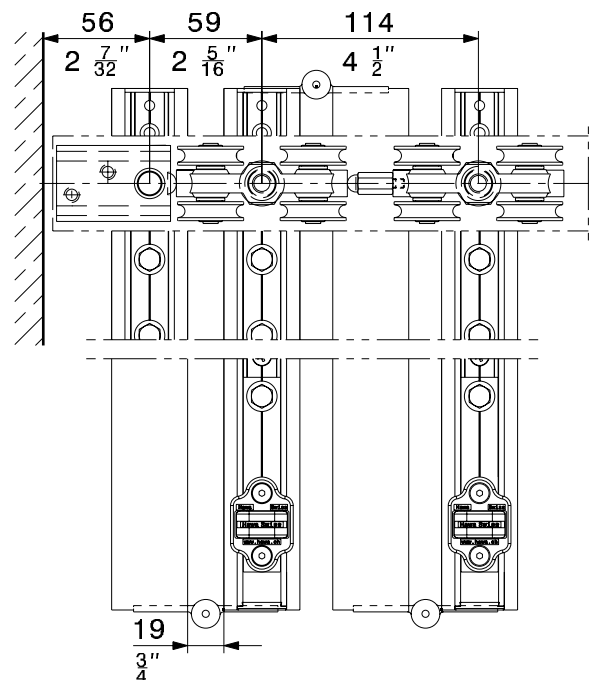
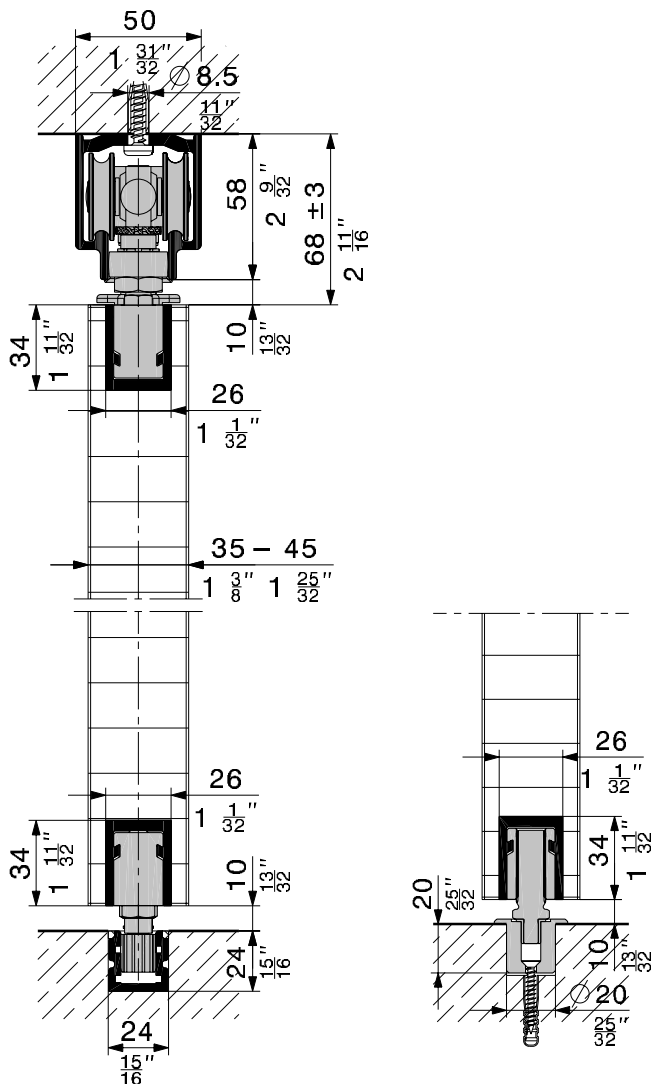
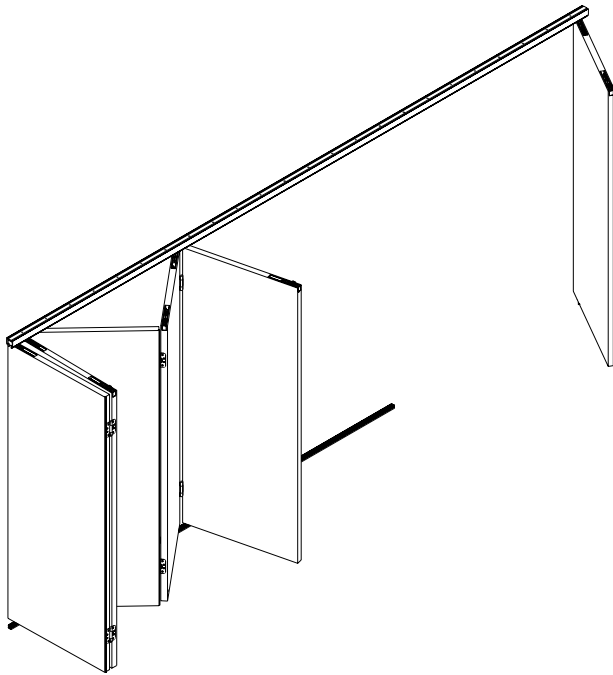
With Hawa Variifold 80 H, panels are guided in a bottom guide channel. Installations with two panels on either side and up to 3,6 m (11'9 $\frac{3}{4}$ ") wide are also possible without a bottom guide channel. A bar bolt lock operated at handle height keeps out unwanted visitors. Alternatively, an unobtrusive deadbolt lock fitted to the bottom edge of the panel provides almost invisible locking.

Applications

Any situation where a simply operated, high-quality folding system is needed to partition a room. Equally suitable for residential and commercial settings, e.g. shopping centres, airports, hotels, restaurants and banks. 2-piece thoroughfare doors in place of conventional hinged doors are most convenient in living space designed for handicapped people.

Features of the Hawa Variifold 80 H

- Minimum panel width 500 mm (1'7 $\frac{11}{16}$ ")
- Maximum panel width 900 mm (2'11 $\frac{7}{16}$ ")
- Panel thickness 35–45 mm (1 $\frac{3}{8}$ "–1 $\frac{25}{32}$ ")
[Panel thickness 46–57 mm (1 $\frac{13}{16}$ "–2 $\frac{1}{4}$ ") available on special request]
- Maximum panel weight 80 kg (176 lbs.)
- Left and right-hand, inwards or outwards-opening installations all use the same components
- A communicating pivot door can be added to the panel stack, or the opposing end
- Equal-width panels for simple planning
- Vertical adjustment ± 3 mm ($\frac{1}{8}$ ")
- Light and quiet running
- Panel stack stores compactly



Partial sets without hinges, running track and bottom guide channel

Sets can be individually assembled		code
	Basic set with pivot bearing and guide	19532
	Basic set with pivot bearing without guide	19534
	Additional set with guide	19533
	Pivot door set to folded stack (without trolley and top pivot bearing)	19620
	Pivot door set for installation with bottom guide channel	19618
	Pivot door set for installation without bottom guide channel	19619
Hawa Variofold 80 H requires a bottom guide channel, except for 2 or 2 + 2 panel installations. (→ installation examples)		

Partial sets comprising

		19532	19534	19533	19620	19618	19619	code
	Top pivot bearing	1	1	-	-	1	1	16485
	Folding-/pivot door catch, adjustable	1	1	1	1	1	1	20426
	Four-wheeled trolley, M10, plastic-tyred wheels and suspension plate	1	1	-	-	-	-	16482
	Four-wheeled trolley, M10, plastic-tyred wheels with suspension plate and spacer	-	-	1	-	-	-	16685
	Suspension profile alu, 208 mm (8 1/8) plain anodized, predrilled	5	4	3	1	3	3	10987
	Thrust bearing for bottom guide channel, including driver	1	-	-	-	1	-	19516
	Thrust bearing sleeve, D = 20 mm (3/4), including driver	-	1	-	-	-	1	19515
	Guide, rattle proof, plastic, for bottom guide channel 24 x 24 mm (1 1/8 x 1 1/8)	1	-	1	-	-	-	19518
	Cover cap for top fixed suspension, plastic anthracit-grey RAL 7016	5	4	3	1	3	3	20907
	Vertical adjustment key	1	1	-	-	-	-	10789
	Suspension assembly locking wrench	1	1	-	-	-	-	14861
	Fork spanner SW 13 mm (1/2)	1	1	-	-	-	-	19128

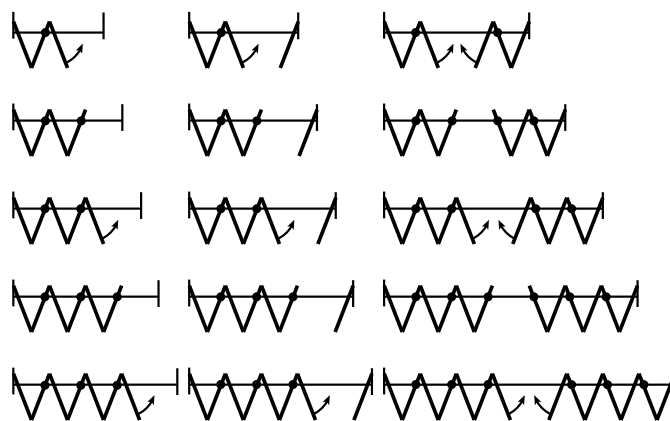
Installation examples

One-sided installations filling an aperture up to 6000 mm (19'8 7/32") width are possible using the 2-panel basic sets, supplementary and pivot door sets – or double this figure for two-sided installations. Hawa Variofold 80 H requires a bottom guide channel, except for 2 or 2 + 2 panel installations.

Installations with or without a bottom guide channel



Installations with a bottom guide channel



These examples illustrate just some of the possibilities.



Running tracks

Caution: Hole positions vary		mm/inch	code
	Running track alu, plain anodized, predrilled	6000 (19'8 ⁷ / ₃₂)	16852
		cut to size	16853

Bottom guide channel

		mm/inch	code
	Bottom guide channel alu, plain anodized, undrilled	6000 (19'8 ⁷ / ₃₂)	15405
		cut to size	15554

Hinge

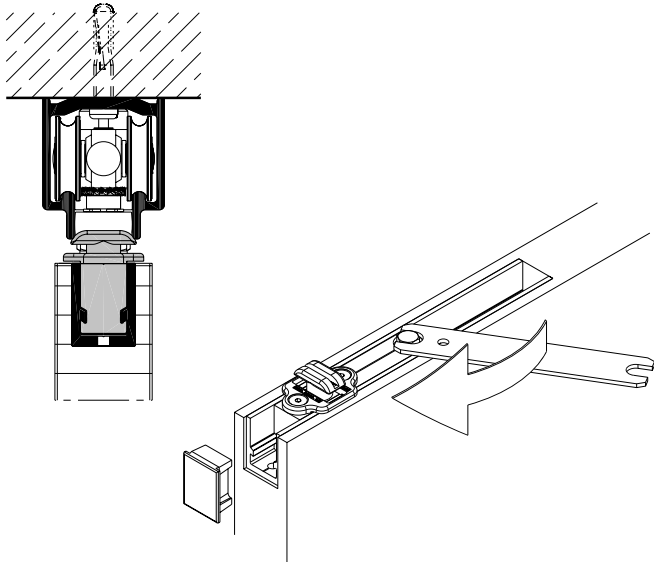
		code
	Stainless steel hinge with heavy load bearings WNR 1.4401/AISI 316, incl. fixing screws	23271
Quantity of hinges per panel joint:		
Panel height ≤ 2500 mm (8'2 ⁷ / ₁₆) = 2 pcs.		
Panel height ≤ 3500 mm (11'5 ¹³ / ₁₆) = 3 pcs.		

Hollow seal

		code
	Hollow seal, rubber black	19657
		Roll of 10 m (32'9 ²⁹ / ₃₂)

Folding-/pivot door catch

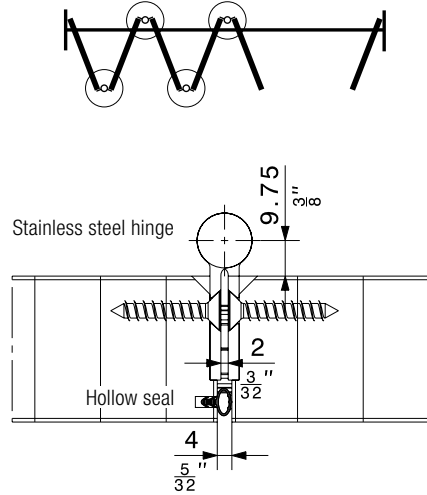
Every other panel has a folding-/pivot door catch (20426). Panels can thus be held flush in position without operating a locking mechanism.



Hinge

High loadbearing capacity means that panels up to 2500 mm (8'2⁷/₁₆" tall require just two hinges.

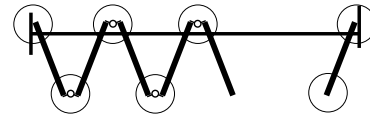
Hinge positions



Hollow seal

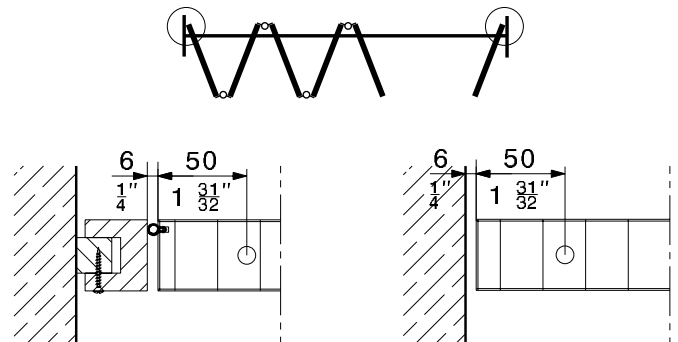
Hollow cross-section seal strips eliminate the problem of light penetrating through gaps between panels.

Hollow seal positions



Wall attachment

Hawa AG recommends a compensation strip for optimum wall attachment. In combination with hollow seal code 19657, this results in the elimination of the light gap and reduces draughts to a minimum. Doors that close directly against the wall must have 6 mm (1/4") clearance.



Version A
With premises-fitted compensation strip and hollow seal code 19657

Version B
Direct wall attachment requires 6 mm (1/4") clearance

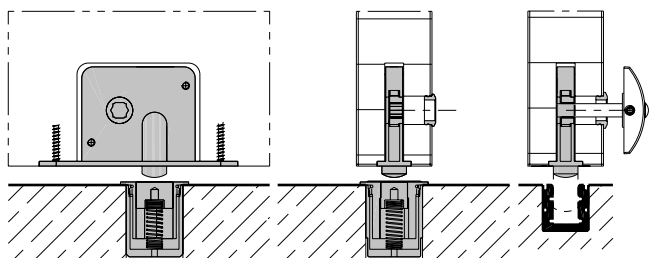
Subject to modification. Metric specifications are exact. Inches are approximate.

Locks

		code
	Deadbolt lock, galv. steel deadbolt 13 mm ($\frac{17}{32}$ ")	10726
	Bar bolt lock, square/hexagonal socket, backset 42,5 mm ($1\frac{11}{16}$ ") Assembly dimensions: → page 45	19592
	Thumbturn, chromium finish, for panel thickness 35 to 40 mm ($1\frac{3}{8}$ " to $1\frac{13}{32}$ ")	13789
	Thumbturn, chromium finish, for panel thickness 41 to 57 mm ($1\frac{5}{8}$ " to $2\frac{1}{4}$ ")	19806
	Slip-fit rose, brass dull nickel finish	13858
	Key for deadbolt lock 10726	10723
	Floor-mounted sleeve with oblong hole and chromium plated brass spring cover	13787
	Rosette for floor-mounted sleeve 13787	17326
	Strike plate, chromium-plated steel	13130

Deadbolt lock

The deadbolt lock code 10726 provides unobtrusive, barely visible locking at the panel bottom edge.



Locking with floor-mounted sleeve code 13787

Locking with bottom guide channel code 15554

Order specifications

- Type and quantity of partial sets
- Length of running track
- Length of bottom guide channel
- Quantity of hinges, → calculation details

Optional order specifications

- Type and quantity of locks
- Quantity of hollow seals

Planning/installation

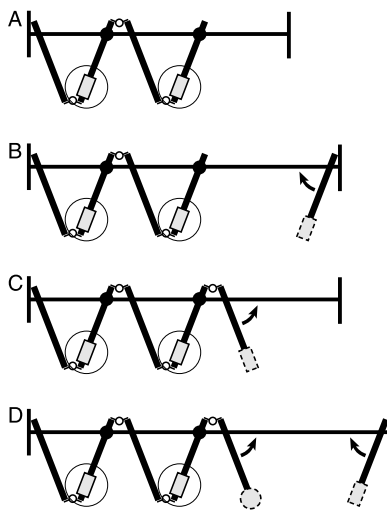
For planning and installation purposes, please see planning and installation instructions code 19586. And for door thicknesses 46–57 mm additionally code 20085. (→ www.hawa.ch → Hawa Productfinder)

Locks

Additional deadbolt or bar bolt locks may be fitted for security, and to keep out unwanted visitors.

Locking from the inside engages the floor-mounted sleeve code 13787 or the bottom guide channel code 15554. Mortice locks can be used to secure pivot doors.

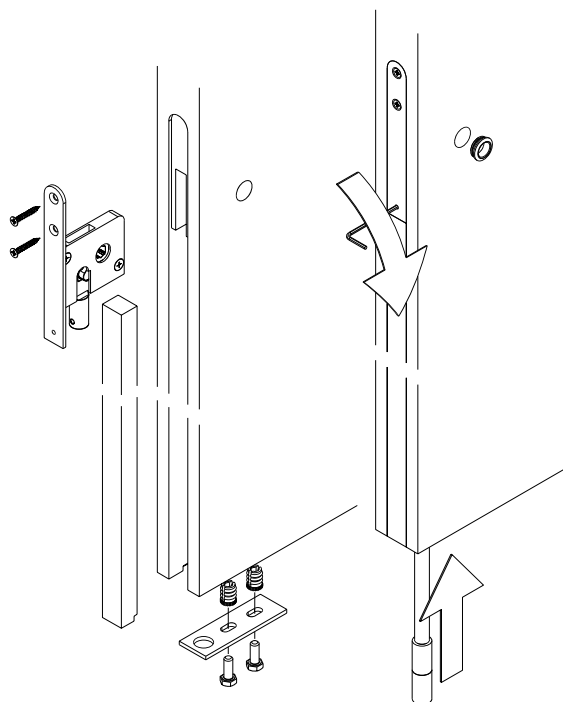
Lock positions



- Deadbolt lock or bar bolt lock
- Door edge bar not supplied by Hawa AG
- Mortice lock not supplied by Hawa AG
- Pivot door

Bar bolt lock

Bar bolt lock code 19592 allows locking the folding wall at handle height.



Subject to modification. Metric specifications are exact. Inches are approximate.

**Flush folding partition walls without a bottom guide channel.****Hardware system for large wooden centre fold walls with panel weighing up to 80 kg (176 lbs.).****Description**

Hawa Centerfold 80 H is a hardware system for wooden centre fold walls with up to 80 kg (176 lbs.) heavy panels. Installations are simple to plan, and quick to assemble. A pivot bearing secures the first panel in the set; the others line up with the help of elegant, stainless steel hinges that bring the panels closer together and minimise the panel stacking space required, the panel set and the opposing end may also have a pivot door fitted. Attached to every other panel is a folding-/pivot door catch with an integrated, individually adjustable retainer, to hold the centre fold wall flush when closed.

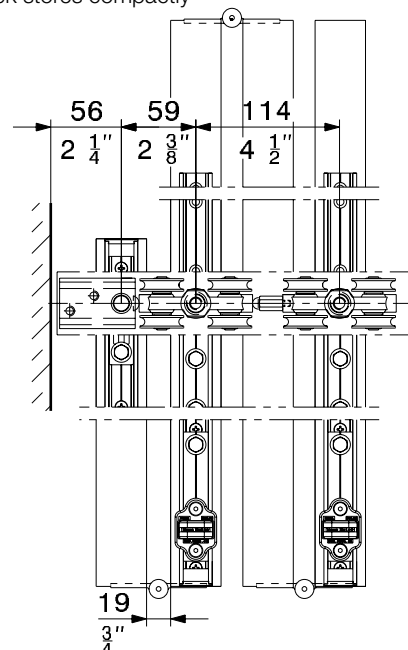
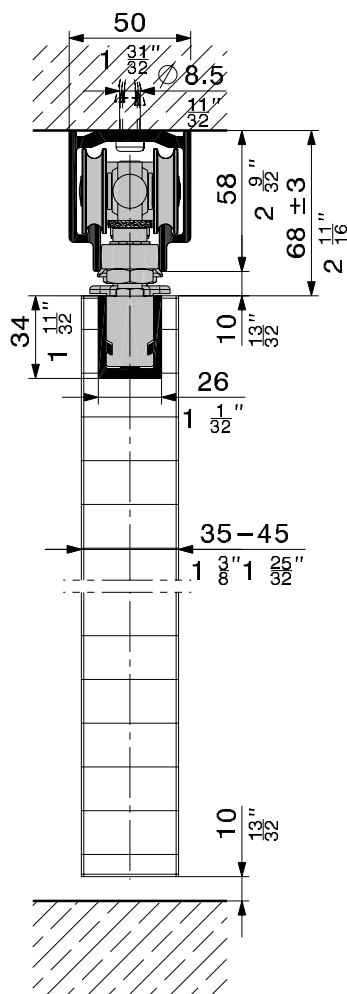
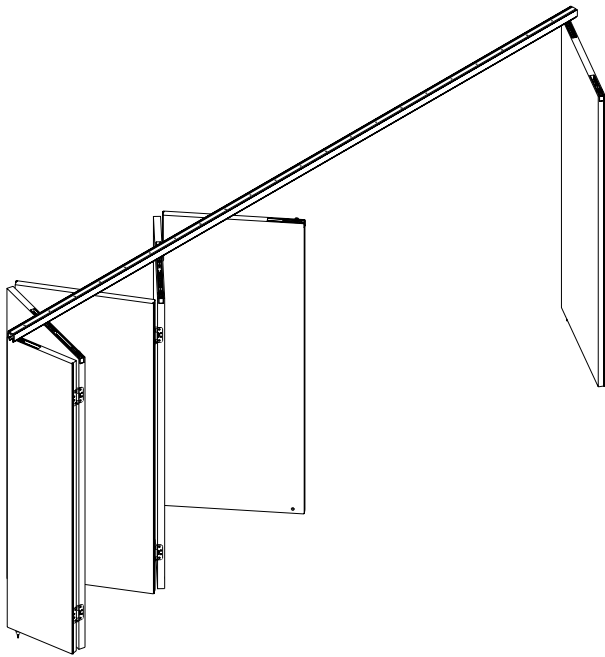
Mid-point panel suspension means that Hawa Centerfold 80 H installations do not require a bottom guide channel. A bar bolt lock operated at handle height keeps out unwanted visitors. Alternatively, an unobtrusive deadbolt fitted to the bottom edge of the panel provides almost invisible locking. Both locks engage with floor inserts, or a locking plate.

Applications

Any situation where a simply operated, high-quality folding system is needed to partition a room. Equally suitable for residential and commercial settings, e.g. shopping centres, airports, hotels, restaurants and banks. $1\frac{1}{2}$ -piece thoroughfare doors in place of conventional hinged doors are most convenient in living space designed for handicapped people.

Features of the Hawa Centerfold 80 H

- Minimum panel width 500 mm ($1'7\frac{11}{16}$ ")
- Maximum panel width 900 mm ($2'11\frac{7}{16}$ ")
- Panel thickness 35–45 mm ($1\frac{3}{8}$ "– $1\frac{25}{32}$ ")
[Panel thickness 46–57 mm ($1\frac{13}{16}$ "– $2\frac{1}{4}$ ") available on special request]
- Maximum panel weight 80 kg (176 lbs.)
- No bottom guide channel
- Left and right-hand, inwards or outwards-opening installations all use the same components
- A communicating pivot door can be added to the panel stack, or the opposing end
- Vertical adjustment ± 3 mm ($\frac{1}{8}$ ")
- Light and quiet running
- Panel stack stores compactly



Subject to modification. Metric specifications are exact. Inches are approximate.



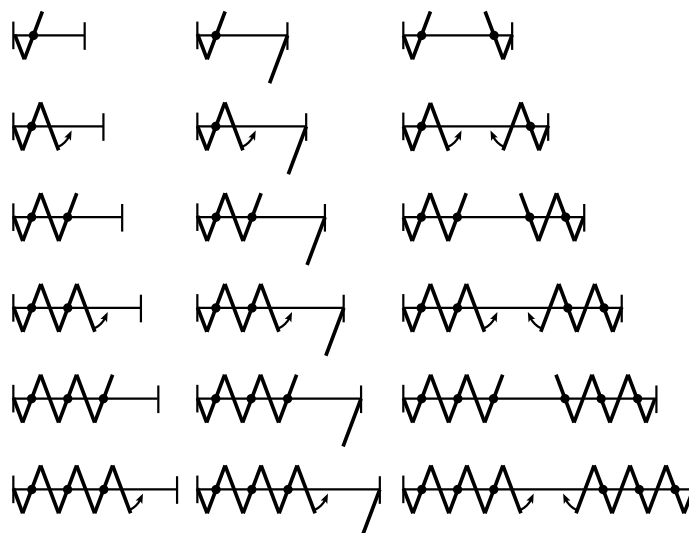
Partial sets without hinges and running track

Sets can be individually assembled		code
	Basic set with pivot bearing without guide	19535
	Additional set without guide	19536
	Pivot door set to folded stack (without trolley and top pivot bearing)	19620
	Pivot door set for installation without bottom guide channel	19619

Hawa Centerfold installations do not need bottom guide channels.

Installation examples

One-sided installations filling an aperture up to 6000 mm (19'8 $\frac{7}{32}$ " width) are possible using the 1 $\frac{1}{2}$ -panel basic sets, supplementary and pivot door sets – or double this figure for two-sided installations. Hawa Centerfold 80 H installations are executed without bottom guide channels.



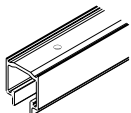
These examples illustrate just some of the possibilities.

Partial sets comprising


		19535	19536	19620	19619	code
	Top pivot bearing	1	-	-	1	16485
	Folding-/pivot door catch, adjustable	1	1	1	1	20426
	Four-wheeled trolley, M10, plastic-tyred wheels and suspension plate	1	-	-	-	16482
	Four-wheeled trolley, M10, plastic-tyred wheels with suspension plate and spacer	-	1	-	-	16685
	Suspension profile alu, 208 mm (8 $\frac{1}{8}$ " plain anodized, predrilled	2	-	1	3	10987
	Suspension profile alu, 550 mm (1'9 $\frac{1}{8}$ " plain anodized, predrilled	1	1	-	-	19524
	Thrust bearing sleeve, D = 20 mm ($\frac{3}{4}$ "), including driver	1	-	-	1	19515
	Cover cap for top fixed suspension, plastic anthracit-grey RAL 7016	3	1	1	3	20907
	Vertical adjustment key	1	-	-	-	10789
	Suspension assembly locking wrench	1	-	-	-	14861
	Fork spanner SW 13 mm ($\frac{1}{2}$ ")	1	-	-	-	19128




Running tracks

Caution: Hole positions vary		mm/inch	code
	Running track alu, plain anodized, predrilled	6000 (19'8 ⁷ / ₃₂ ")	16852
		cut to size	16853

Hinge

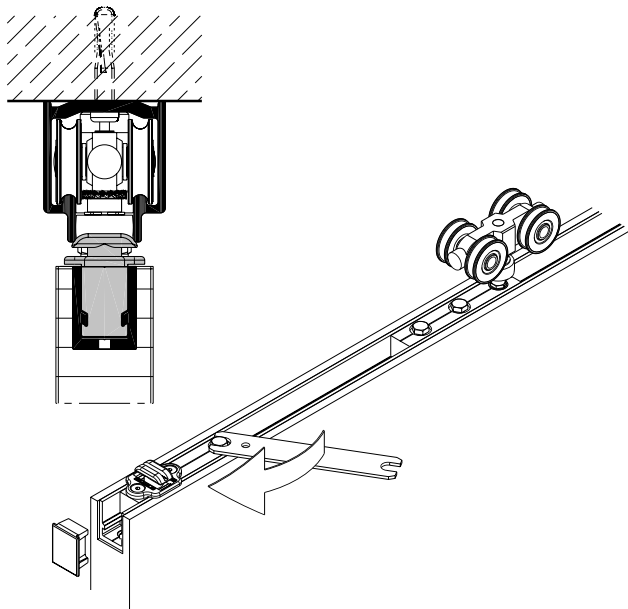
		code
	Stainless steel hinge with heavy load bearings WNR 1.4401/AISI 316, incl. fixing screws	23271
Quantity of hinges per panel joint: Panel height ≤ 2500 mm (8'2 ⁷ / ₁₆ ") = 2 pcs. Panel height ≤ 3500 mm (11'5 ³ / ₁₆ ") = 3 pcs.		

Hollow seal

		code
	Hollow seal, rubber black	roll of 10 m (32'9 ²³ / ₃₂ ") 19657

Folding-/pivot door catch

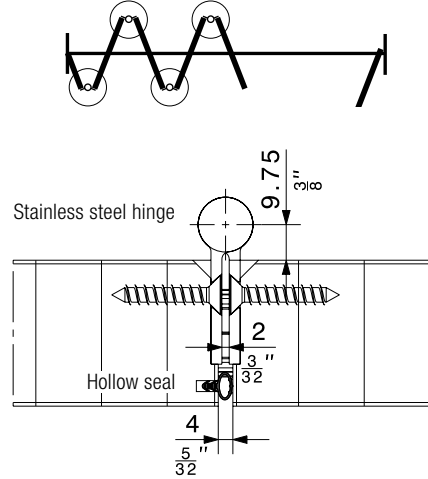
Every other panel has a Folding-/pivot door catch (20426). Panels can thus be held flush in position without operating a locking mechanism.



Hinge

High loadbearing capacity means that panels up to 2500 mm (8'2⁷/₁₆") tall require just two hinges.

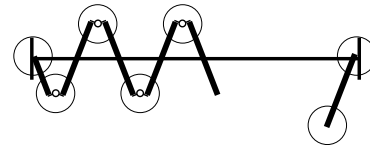
Hinge positions



Hollow seal

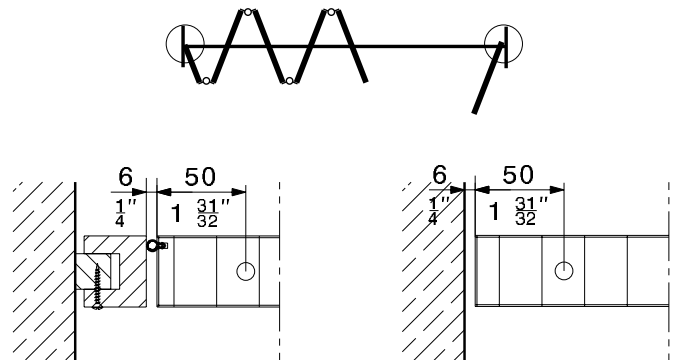
Hollow cross-section seal strips eliminate the problem of light penetrating through gaps between panels.

Hollow seal positions



Wall attachment

Hawa AG recommends a compensation strip for optimum wall attachment. In combination with hollow seal code 19657, this results in the elimination of the light gap and reduces draughts to a minimum. Doors that close directly against the wall must have 6 mm (1/4") clearance.


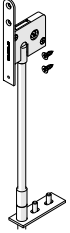






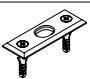


Version A
With premises-fitted compensation strip and hollow seal code 19657

Version B
Direct wall attachment requires 6 mm (1/4") clearance

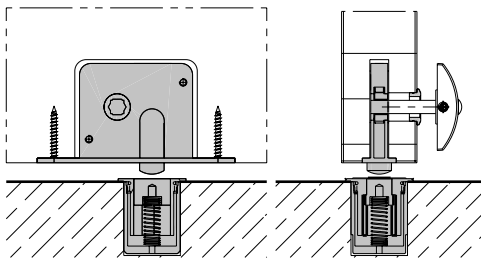
Subject to modification. Metric specifications are exact. Inches are approximate.

**Locks**

		code
	Deadbolt lock, galv. steel deadbolt 13 mm ($\frac{17}{16}$ ")	10726
	Bar bolt lock, square/hexagonal socket, backset 42.5 mm ($1\frac{11}{16}$ ") Assembly dimensions: → page 45	19592
	Thumbturn, chromium finish, for panel thickness 35 to 40 mm ($1\frac{3}{8}$ " to $1\frac{19}{32}$ ")	13789
	Thumbturn, chromium finish, for panel thickness 41 to 57 mm ($1\frac{5}{8}$ " to $2\frac{1}{4}$ ")	19806
	Slip-fit rose, brass dull nickel finish	13858
	Key for deadbolt lock 10726	10723
	Floor-mounted sleeve with oblong hole and chromium plated brass spring cover	13787
	Rosette for floor-mounted sleeve 13787	17326
	Strike plate, chromium-plated steel	13130

Deadbolt lock

The deadbolt lock code 10726 provides unobtrusive, barely visible locking at the panel bottom edge.



Locking with floor-mounted sleeve code 13787

Order specifications

- Type and quantity of partial sets
- Length of running track
- Quantity of hinges, → calculation details

Optional order specifications

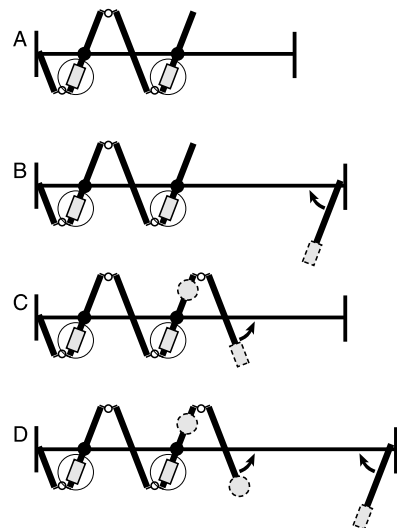
- Type and quantity of locks
- Quantity of hollow seals





Planning/installation

For planning and installation purposes, please use planning and installation instructions code 19587. And for door thicknesses 46–57 mm additionally code 20086. (→ www.hawa.ch → Hawa Productfinder)

Locks

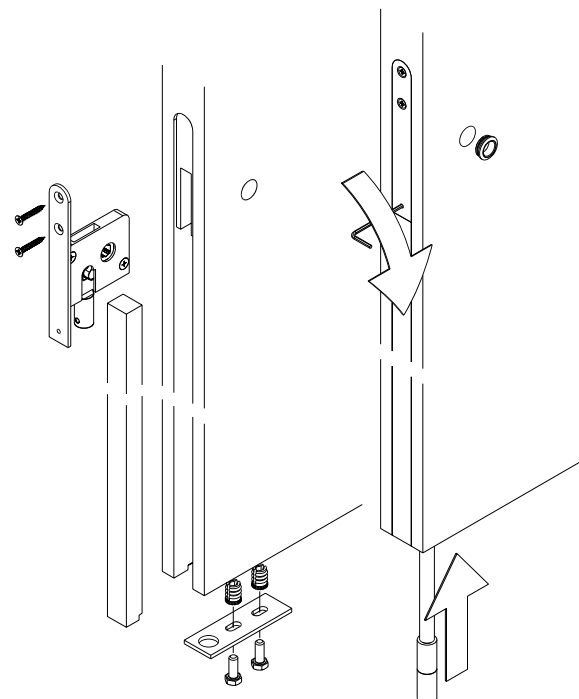
Additional deadbolt or bar bolt locks may be fitted for safety and to keep out unwanted visitors. Locking from the inside engages the floor-mounted sleeve code 13787. Mortice locks can be used to secure pivot doors.

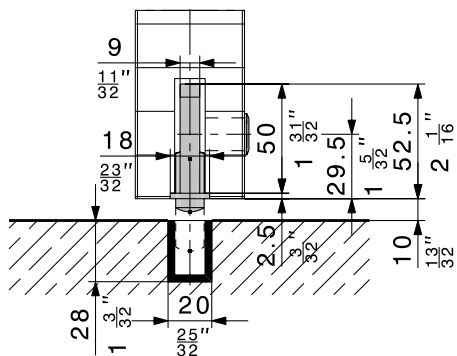
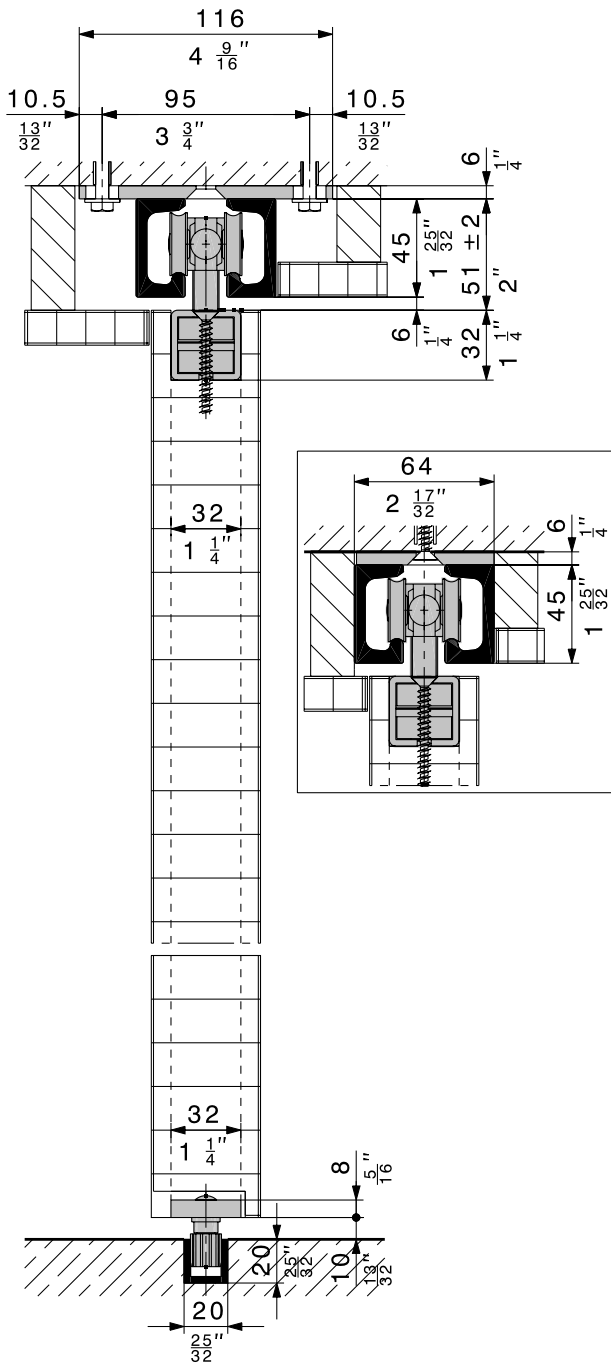
Lock positions

-  Deadbolt lock or bar bolt lock
-  Door edge bar not supplied by Hawa AG
-  Mortice lock not supplied by Hawa AG
-  Pivot door

Bar bolt lock

Bar bolt lock code 19592 allows locking the folding wall at handle height.





Hardware system for room division applications for panel weights up to 120 kg (264 lbs.).

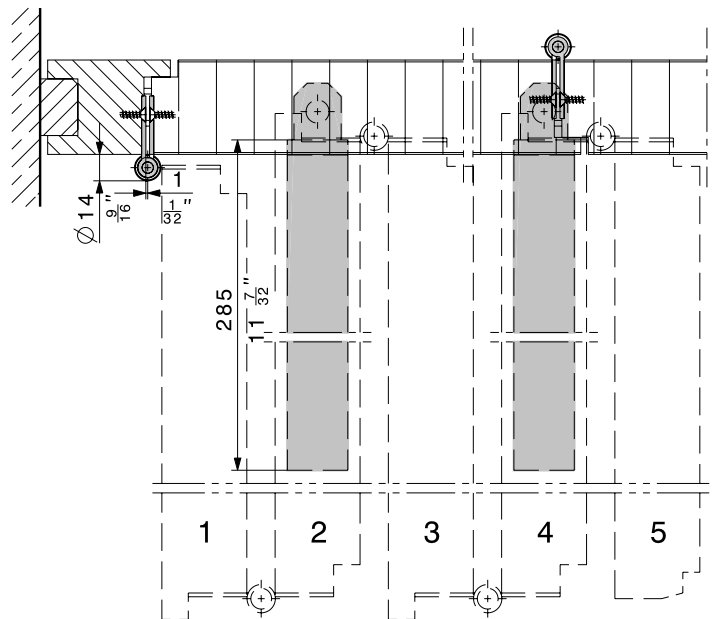
Description

In the event of an odd number of panels, the last panel can be designed as a communicating door. A stop can be provided on top if desired. When open, the panels are at an angle of 90° to the closed partition. The panel stacks may be arranged on the right- and/or left-hand side. Within a panel stack, the panels are hinged together. Starting from the first panel (which is hinged to the frame), every second panel is suspended at its side edge. This calls for a floor guide. To fix non-guided panels, a bar bolt lock is placed at the end of panels 1, 3, 5, etc. When the partition is closed, the panels are secured into the bottom guide channel.

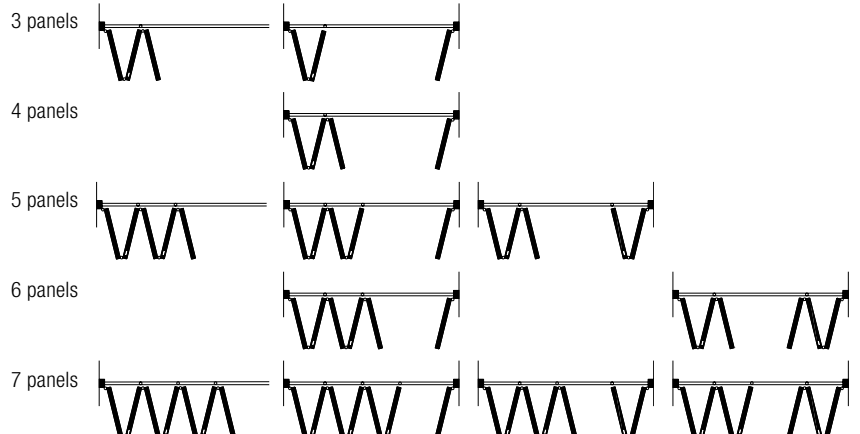
The first panels should be made slightly narrower in precise ratio to the other panels. The width of the first panel hinged at the rear (1) is not identical to that of the following panels.

Features of the Hawa 20 C Folding wall 120

- Hardware system for room division applications
- Max panel weight: 120 kg (264 lbs.)
- Max panel width: 1000 mm (3'3 3/8")
- Special trolley as supplementary component for fire doors
- Adjustable vertically ± 2 mm (3/32")



Installation examples



Subject to modification. Metric specifications are exact. Inches are approximate.



Sets without running track and bottom guide channel

		code
	Set for 3 panels	12804
	Set for 4 panels	12805
	Set for 5 panels	12806
	Set for 6 panels	12807
	Set for 7 panels	12808

Set comprising

		12804	12805	12806	12807	12808	code
	Four-wheeled trolley, M12, steel ball bearing wheels	1	1	2	2	3	10362
	Top and edge fixed bracket, with suspension plate and hanger bolt M12	1	1	2	2	3	10453
	Edge fixed bottom guide with rattle proof guide piece, 14 mm ($\frac{9}{16}$ "	1	1	2	2	3	12945
	Ball bearing hinge, steel dull nickel finish, with fixing screws	9	12	15	18	21	10652
	Deadbolt lock, 13 mm ($\frac{17}{32}$) galvanized steel	1	1	2	2	3	10726
	Slip-fit rose, brass dull nickel finish	1	1	2	2	3	13858
	Key for deadbolt lock	1	1	1	1	1	10723

Dual running tracks

Caution: Hole positions vary		mm/inch	code
	Dual running track, stainless steel, WNR 1.4301/AISI 304, with top mounting flanges	6000 (19'8 $\frac{7}{32}$ ")	18039
		cut to size	18040
	Dual running track, stainless steel, WNR 1.4301/AISI 304, with flush mounting flanges	6000 (19'8 $\frac{7}{32}$ ")	18496
		cut to size	18497

Accessories

		code
	Ball bearing hinge, burnished steel, with fixing screws	10666
	Track stop, galvanized steel, to be drilled into the track	16768

Component for fire-retarding doors

		code
	Four-wheeled trolley M12, steel, with steel ball bearing wheels	15558

Bottom guide channels

Caution: Hole positions vary		mm/inch	code
	Bottom guide channel, alu plain anodized, predrilled, 20 x 20 x 3 mm ($\frac{39}{16}$ " x $\frac{39}{16}$ " x $\frac{1}{8}$ "	6000 (19'8 $\frac{7}{32}$ ")	14414
		cut to size	14415
	Bottom guide channel, brass, predrilled, 20 x 28 x 3 mm ($\frac{39}{16}$ " x 1 $\frac{1}{8}$ " x $\frac{1}{8}$ "	6000 (19'8 $\frac{7}{32}$ ")	10245
		cut to size	10247

Hawa Bar bolt lock

		code
	Bar bolt lock Backset 42,5 mm (1 $\frac{11}{16}$ ") Socket square/hexagonal, 7/8 mm Total lift of push rod: 18 mm ($\frac{33}{16}$ ") Operation height: 960 mm (3'11 $\frac{13}{16}$ ") complete The bar bolt lock can be operated from the door surface with a square/hexagonal key.	19592
	Thumbturn, chromium finish, for panel thickness 35 to 40 mm (1 $\frac{3}{8}$ " to 1 $\frac{59}{32}$ ")	13789
	Thumbturn, chromium finish, for panel thickness 41 to 57 mm (1 $\frac{5}{8}$ " to 2 $\frac{1}{4}$ ")	19806
	Key for deadbolt lock	10723
	Slip-fit rose, brass dull nickel finish	13858
	Floor-mounted sleeve with oblong hole and chromium plated brass spring cover	13787
	Rosette for floor-mounted sleeve 13787	17326
	Strike plate, chromium-plated steel	13130

Quantity of hinges required

panel height	pieces
up to 2500 mm (8'2 $\frac{7}{16}$ ")	3
2501–3200 mm (8'2 $\frac{33}{32}$ "–10'6")	4
3201–4000 mm (10'6 $\frac{1}{32}$ "–13'1 $\frac{1}{2}$ ")	5

Order specifications

We require the following details in order to prepare a quote and version for you:

- Sketch of the situation
- Clearance dimensions
- Quantity of panels
- Width and height of panels
- Weight of one panel
- Panel thickness
- Quantity of supplementary hinges

Planning/installation

For planning and execution please use the installation drawing code 12398. (→ www.hawa.ch → Hawa Productfinder)



Hardware system for all-glass folding walls with panels weighing up to 80 kg (176 lbs.)

Description

Hawa Variofold 80 GV is a hardware system for all-glass folding-wall installations with an even number of panels. If required, an access door may also be installed on the opposite side to the folding stack. Our documentation simplifies the task of planning such systems, and installation is also simple and convenient. All mechanisms, suspension devices, guides and locks are fully integrated into highly attractive suspension and glass retainer profiles, which are the same ones used for Hawa Variotec 150 GV stacking-wall system. Attached to every other panel is a folding-/pivot door catch with an integrated, individually adjustable retainer, to hold the folding wall flush when closed. The newly developed hinge is installed on the side of the profile.

Applications

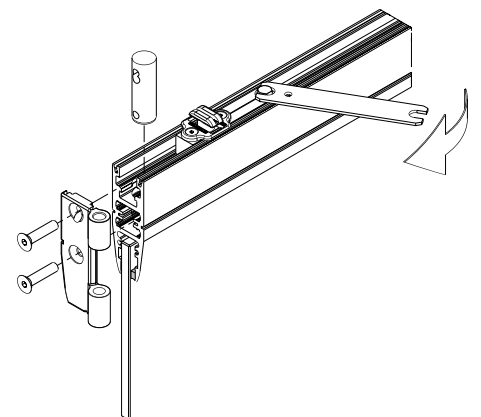
This hardware system is ideal for use wherever a room needs to be divided using a high-quality glass folding wall that is also simple to operate, e.g. in shopping centres, airports, hotels, restaurants, banks, etc.

Features of the Hawa Variofold 80 GV

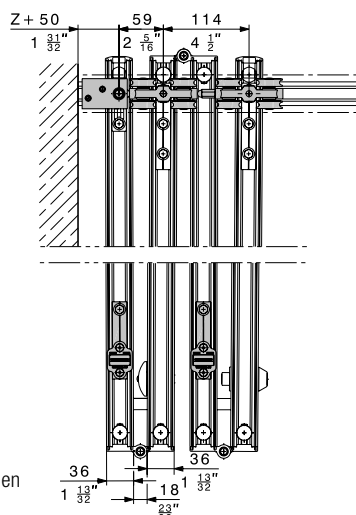
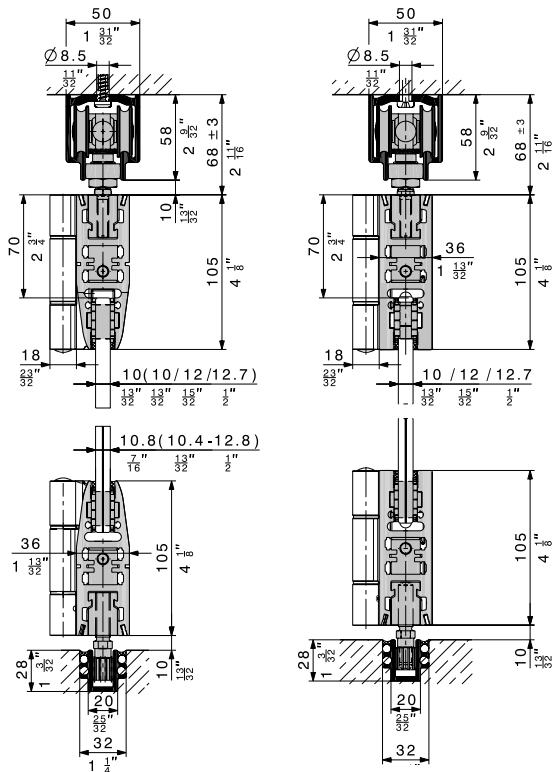
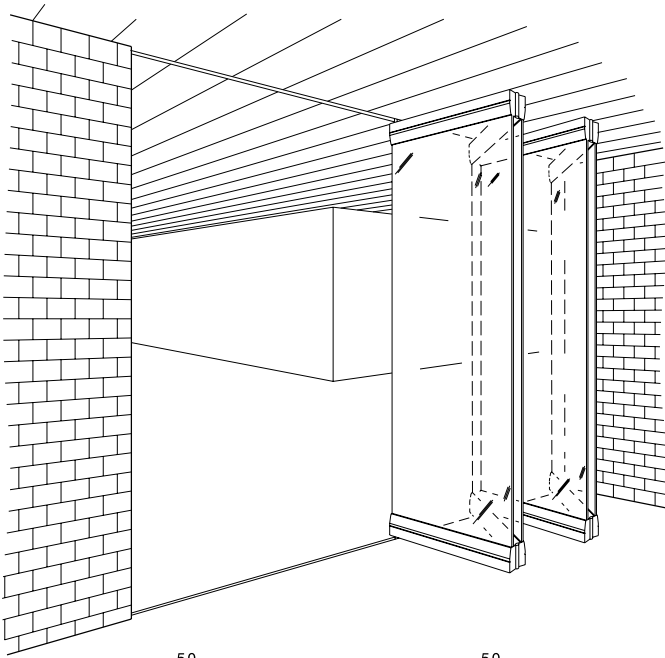
- Min. panel width 400 mm (1'3 3/4")
- Max. panel width 900 mm (2'11 7/16")
- Max. panel height 2600 mm (8'6 3/8")
- Max. panel weight 80 kg (176 lbs.)
- The same components may be used for constructing installations that open to the left or right, inwards or outwards
- The opposite side may be equipped with a separate pivot door
- Vertical adjustment ± 3 mm (± 1/8")
- Elegant design
- Secure locking mechanism
- Extremely smooth and silent operation
- Minimal space requirement in stacking area
- Glass thickness fixed glass
ESG (fully tempered monolithic glass): 10/12/12,7 mm (13/32/15/32/1/2")
VSG (fully tempered laminated glass): 10,8-13 mm (7/16"-17/32")

Folding-/pivot door catch

Every other panel has a folding-/pivot door catch (20426). Panels can thus be held flush in position without operating a locking mechanism.

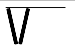







Subject to modification. Metric specifications are exact. Inches are approximate.



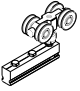
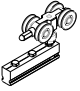
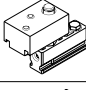

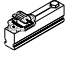
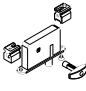
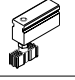





Partial sets without running track and bottom guide channel

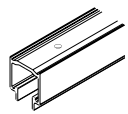
		code
	Set for 2 panels	16780
	Set for 2 panel unit with pivot panel	16781
	Set for 4 panels	16782
	Set for 4 panel unit with pivot panel	16783
	Set for 6 panels	16784
	Set for 6 panel unit with pivot panel	16785

Hawa Variofold installations must be equipped with bottom guide channels, except sets 16780 and 16781.

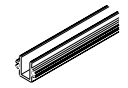
Partial sets comprising

		16780	16781	16782	16783	16784	16785	code
	Four-wheeled trolley, M10, with plastic wheels	1	1	1	1	1	1	16482
	Four-wheeled trolley, M10, with plastic wheels and spacer	-	-	1	1	2	2	16685
	Top pivot bearing	1	2	1	2	1	2	16485
	Vertically adjustable driver for pivot door	1	2	1	2	1	2	16325
	Folding-/pivot door catch, adjustable	1	2	2	3	3	4	20426
	Hawa bar bolt lock, square/hexagon socket 7/8 mm, complete with pivot	-	2	1	2	2	3	16968
	Guide, rattle proof, plastic, 14 mm (9/16"), with suspension block	-	-	2	2	3	3	13781
	Vertical adjustment key SW 19	1	1	1	1	1	1	10789
	Suspension assembly locking wrench SW 10/11	1	1	1	1	1	1	14861
	Fork spanner SW 22/12, pivot door vertical adjustment	1	1	1	1	1	1	15409

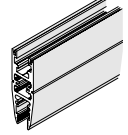
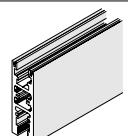
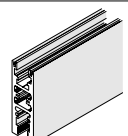
Running tracks

Caution: Hole positions vary		mm/inch	code
	Running track, alu plain, anodized, predrilled	6000 (19'8 3/8")	16852
		cut to size	16853

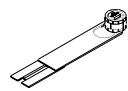
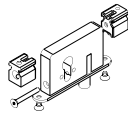
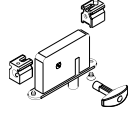


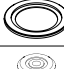
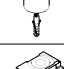
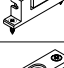
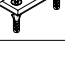
Bottom guide channels

Caution: Hole positions vary		mm/inch	code
	Bottom guide channel, alu plain anodized, predrilled, 31 x 28 mm (1 7/8" x 1 1/8")	6000 (19'8 3/8")	13688
		cut to size	13690

Glass suspension and retainer profiles

		mm/inch	code
	Glass suspension retainer profile, alu plain anodized, brushed	6500 (21'3 3/8")	16669
		cut to size	19868
	Glass suspension retainer profile, alu, unanodized	6500 (21'3 3/8")	13576
		cut to size	13681
	Glass suspension retainer profile, alu plain anodized, brushed (straight profile)	6500 (21'3 3/8")	23440
		cut to size	23443

Components

			code
	Set of glass-fixing parts, for 1 sliding door (4 pieces)	ESG ¹ 10 mm (3/8")	13900
		ESG ¹ 12 mm (1/2")	13901
		ESG ¹ 12,7 mm (1/2")	13902
		VSG ² 2 x 5 mm (2 x 7/32")	21263
		VSG ² 2 x 6 mm (2 x 1/4")	23542
	Hawa bar bolt lock with retention pin	profile cylinder 17 mm (5/8")	16760
		round cylinder 22 mm (7/8")	16761
	Hawa bar bolt lock, square/hexagon socket 7/8 mm, complete with pivot		16968
	Security rose 12 mm (15/32"), for profile cylinder 17 mm (5/8"), chromium-nickel steel		14147
	Floor-mounted sleeve with oblong hole and chromium-plated brass spring		13787
	Rosette for floor-mounted sleeve 13787		17326
	Thrust bearing sleeve, Ø 30 mm (1 1/8"), for pivot door		16326
	Thrust bearing, adjustable, Inox, for fitting into bottom guide channel		22299
	Strike plate, chromium-plated steel		13130



Components

			code
	Hinge, zinc alloy, with fixing screws	dull chromium finish	16091
		raw	16088
	Hinge, zinc alloy, with fixing screws (straight profile)	dull chromium finish	25976
	Cover caps, zinc alloy, set of 4 pieces	dull chromium finish	16692
		raw	16693
	Cover caps, zinc alloy, set of 4 pieces (straight profile)	dull chromium finish	25982

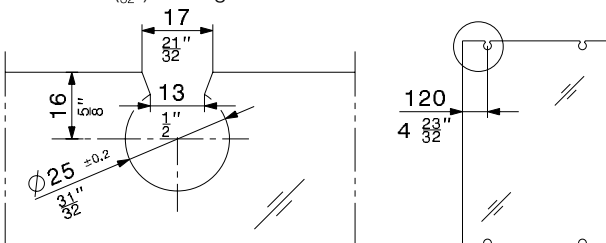
Accessories

			code
	Cover cap (1 piece)	dull chromium finish	16690
		raw	16691
	Additional top lock		16491
	Short connecting rod for door height up to 2500 mm (8'2 7/16")		14164
	Long connecting rod for door height over 2500 mm (8'2 7/16")		14165
	Brush seal 2,6/18 x 920 mm (1/8"/32" x 3'7 3/32") for glass suspension and retainer profile		16797
	Fork spanner to glass holder insert		13817
	Installation tool for blocking keys 10-12,7 mm (3/8" - 1/2") glass		13710
	Drilling jig, for hinge retention bolts		16979

Glass cutouts for sliding door

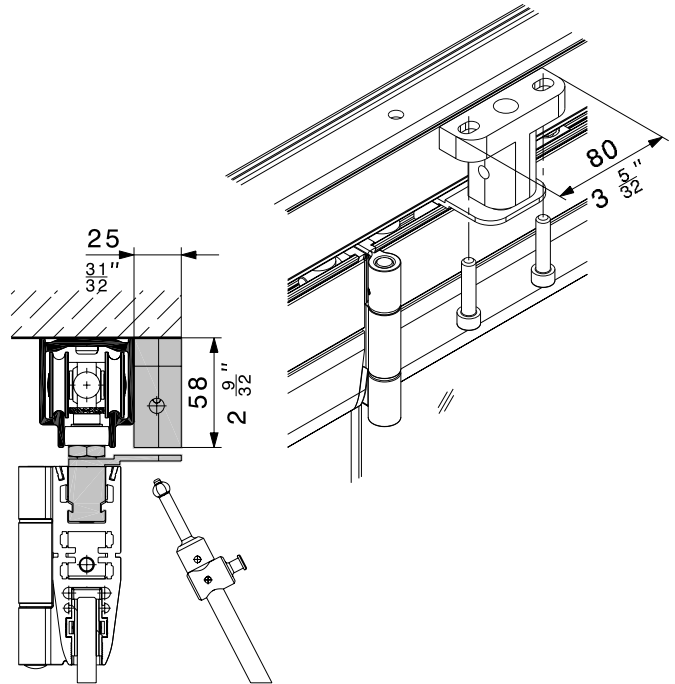
Both glass ESG (fully tempered monolithic glass) and VSG (fully tempered laminated glass) can be used.

- Glass thickness sliding door ESG (fully tempered monolithic glass): 8/10/12/12,7 mm (5/16"/13/32"/15/32"/1/2"), thickness tolerance ± 0,3 mm
- Glass thickness sliding door VSG (fully tempered laminated glass): 2x5 ± 0,2 mm → film thickness 0,76/1,52 mm
2x6 ± 0,2 mm → film thickness 0,38/0,76 mm
- All glass edges are seamed; maximum 1 mm (1/16") in the glass cutout
- VSG (fully tempered laminated glass) permissible with max. offset of 2 mm (3/32") in the glass cutout



Additional top lock

The additional top lock code 16491 ensures more security.



Service

		code
Lock cutout incl drilling for double cylinder	17 mm (5/16")	19615
	22 mm (7/8")	19616
Lock cutout incl. drilling for square/hexagon socket		19617
Lock cutout incl. drilling for double cylinder and retention bolts	17 mm (5/16")	19612
	22 mm (7/8")	19613
Lock cutout incl. drilling for square/hexagon socket and retention bolts		19614
Drilling on both sides for hinge retention bolts		16736

Surface treatment are charged separately. Prices on request.

Order specifications

- Quantity and type of sets
- Length of running track
- Length of bottom guide channel
- Width and height of glass
- Thickness of glass
- Quantity and type of cover caps
- Quantity and type of bottom guides
- Layout sketch

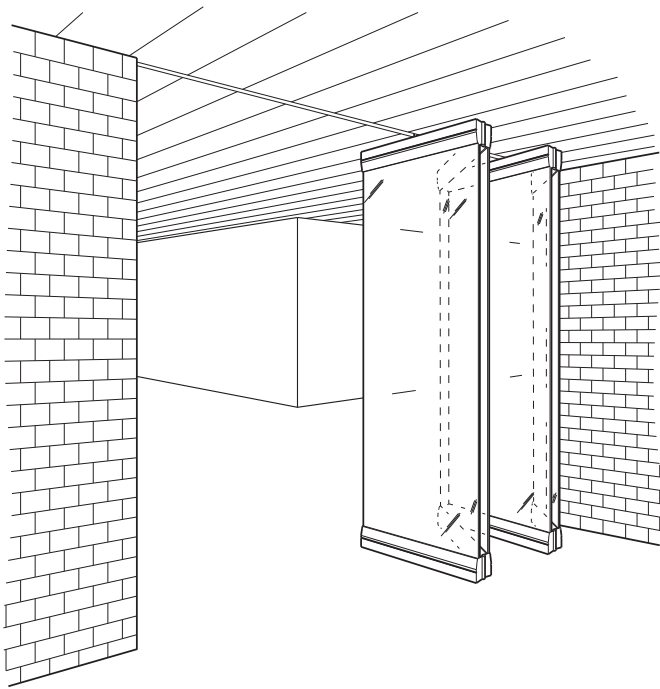
Optional order specifications

- Quantity of additional top lock
- Quantity and type of connecting rod
- Quantity of drilling jig, for hinge retention bolts
- Quantity and type of tool for glazing
- Quantity of brush profile

Planning/installation

For planning and installation purposes, please use the installation drawing code 16824. (→ www.hawa.ch → Hawa Productfinder)

Subject to modification. Metric specifications are exact. Inches are approximate.



Hardware system for all-glass concertina walls up to 80 kg (176 lbs.).

Description

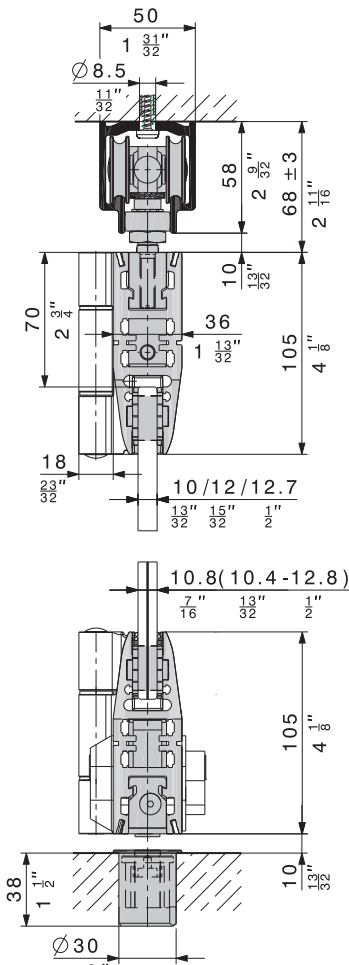
With all-glass concertina-wall installations, the suspension point is in the centre of the panel, which means that up to 6 1/2 panels may be installed without the need for a bottom guide. An access door equipped with our top pivot may also be added on the opposite side to the folding stack. All mechanisms, suspension devices, guides and locks are fully integrated into highly attractive suspension and glass retainer profiles, and our newly developed hinge is installed on the side of the profile. The suspension and glass retainer profiles are the same ones used for HAWA-Variotec 150/GV stacking-wall system. Attached to every other panel is a folding-/pivot door catch with an integrated, individually adjustable retainer, to hold the folding wall flush when closed. Our documentation simplifies the task of planning such systems, and installation is also simple and convenient.

Applications

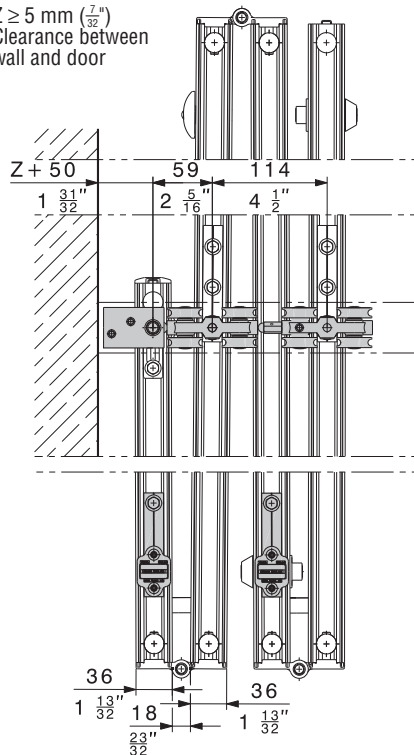
This hardware system is ideal for use wherever a room needs to be divided using a high-quality glass concertina wall that is also simple to operate, e.g. in shopping centres, airports, hotels, restaurants, banks, etc.

Features of the HAWA-Centerfold 80/GV

- Min. panel width 500 mm (1'7 ¹¹/₁₆")
- Max. panel width 900 mm (2'11 ⁷/₁₆")
- Max. panel height 2600 mm (8'6 ³/₈")
- Max. panel weight 80 kg (176 lbs.)
- The same components may be used for constructing installations that open to the left or right, inwards or outwards
- The opposite side may be equipped with a separate pivot door
- Vertical adjustment ± 3 mm (± ¹/₈")
- Elegant design
- Secure locking mechanism
- Extremely smooth and silent operation
- Minimal space requirement in staking area
- Glass thickness ESG¹: 10/12/12,7 mm (¹³/₃₂" / ¹⁵/₃₂" / ¹/₂")
- VSG²: 10,8–13 mm (⁷/₁₆" – ¹⁷/₃₂")

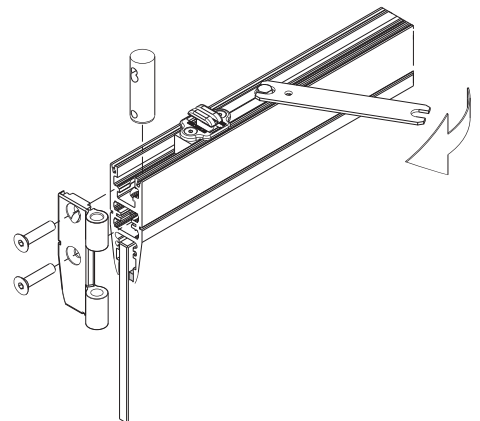


Z ≥ 5 mm (⁷/₃₂")
Clearance between wall and door



Folding-/pivot door catch

Every other panel has a folding-/pivot door catch (20426). Panels can thus be held flush in position without operating a locking mechanism.



¹ fully tempered monolithic glass

² fully tempered laminated glass

Subject to modification. Metric specifications are exact. Inches are approximate.



Partial sets without top track and bottom guide channel

		code
	Set for 1½ panel	16786
	Set for 1½ panel unit with pivot panel	16787
	Set for 2½ panels	16788
	Set for 2½ panel unit with pivot panel	16789
	Set for 3½ panels	16790
	Set for 3½ panel unit with pivot panel	16791
	Set for 4½ panels	16792
	Set for 4½ panel unit with pivot panel	16793
	Set for 5½ panels	16794
	Set for 5½ panel unit with pivot panel	16795
In principle, HAWA-Centerfold systems may be installed without the need for a bottom guide channel.		

Top tracks

Caution: Hole positions vary.			code
	Top track, alu plain, anodized, predrilled	6000 mm (19'8 ⁷ / ₃₂ ")	16852
		cut to size	16853

Bottom guide channels

Caution: Hole positions vary.			code
	Bottom guide channel, alu plain anodized, predrilled, 31 x 28 mm (1 ⁷ / ₃₂ " x 1 ¹¹ / ₈ ")	6000 mm (19'8 ⁷ / ₃₂ ")	13688
		cut to size	13690

Glass suspension and retainer profiles

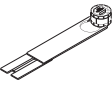
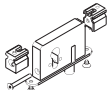
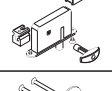
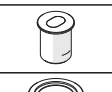
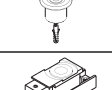
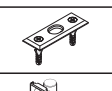
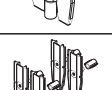

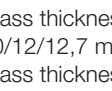
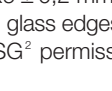

			code
	Glass suspension retainer profile, alu plain, anodized, brushed	6500 mm (21'3 ²⁹ / ₃₂ ")	16669
		cut to size	19868
	Glass suspension retainer profile, alu, unanodized	6500 mm (21'3 ²⁹ / ₃₂ ")	13576
		cut to size	13681

Partial sets comprising

	16786	16787	16788	16789	16790	16791	16792	16793	16794	16795	code
Four-wheeled trolley, M10, with plastic wheels	1	1	1	1	1	1	1	1	1	1	16482
Four-wheeled trolley, M10, with plastic wheels and spacer	-	-	-	-	1	1	1	1	2	2	16685
Top pivot bearing	1	2	1	2	1	2	1	2	1	2	16485
Vertically adjustable driver for pivot door	1	2	1	2	1	2	1	2	1	2	16325
End stop	-	-	1	1	-	-	1	1	-	-	16701
Folding-/pivot door catch, adjustable	1	2	2	3	2	3	3	4	3	4	20426
HAWA bar bolt lock, square/hexagon socket 7/8 mm, complete with pivot	-	1	-	2	1	3	2	4	3	5	16968
Vertical adjustment key SW 19	1	1	1	1	1	1	1	1	1	1	10789
Suspension assembly locking wrench SW 10/11	1	1	1	1	1	1	1	1	1	1	14861
Fork spanner SW 22/12 pivot door vertical adjustment	1	1	1	1	1	1	1	1	1	1	15409



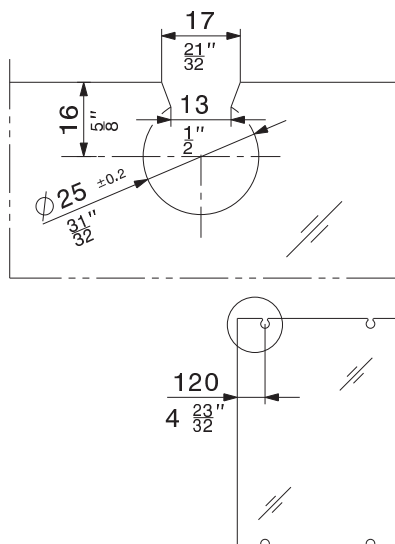
Components

		code
	Set of glass-fixing parts, for 1 sliding door (4 pieces)	ESG ¹ 10 mm ($\frac{13}{32}$ ") 13900
		ESG ¹ 12 mm ($\frac{15}{32}$ ") 13901
		ESG ¹ 12,7 mm ($\frac{1}{2}$ ") 13902
		VSG ² 2x5 mm ($2 \times \frac{7}{32}$ ") 21263
		VSG ² 2x6 mm ($2 \times \frac{1}{4}$ ") 23542
	HAWA-bar bolt lock with retention pin	profile cylinder 17 mm ($\frac{11}{16}$ ") 16760
		round cylinder 22 mm ($\frac{7}{8}$ ") 16761
	HAWA-bar bolt lock, square/hexagon socket 7/8 mm, complete with pivot	16968
	Security rose 12 mm ($\frac{15}{32}$ ") for profile cylinder 17 mm ($\frac{11}{16}$ "), chromium-nickel steel	14147
	Floor-mounted sleeve with oblong hole and chromium-plated brass spring	13787
	Rosette for floor-mounted sleeve 13787	17326
	Thrust bearing sleeve, Ø 30 mm ($1 \frac{3}{16}$ "), for pivot door	16326
	Thrust bearing, adjustable, Inox, for fitting into bottom guide channel	22299
	Strike plate, chromium-plated steel	13130
	Hinge, zinc alloy, with fixing screws	dull chromium finish 16091
		raw 16088
	Cover caps, zinc alloy, (set of 4 pieces)	dull chromium finish 16692
		raw 16693

Glass cutouts for sliding door

Both glass ESG¹ and VSG² can be used.

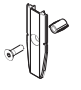
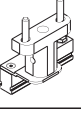
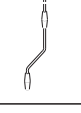

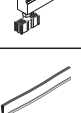
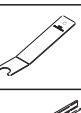
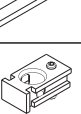


- Glass thickness sliding door ESG¹: 10/12/12,7 mm ($\frac{13}{32}$ / $\frac{15}{32}$ / $\frac{1}{2}$ "), thickness tolerance $\pm 0,3$ mm
- Glass thickness sliding door VSG²: 2x5 $\pm 0,2$ mm \rightarrow film thickness 0,76 / 1,52 mm 2x6 $\pm 0,2$ mm \rightarrow film thickness 0,38 / 0,76 mm
- All glass edges are seamed; maximum 1 mm ($\frac{1}{16}$ ") in the glass cutout
- VSG² permissible with max. offset of 2 mm ($\frac{3}{32}$ ") in the glass cutout



¹ fully tempered monolithic glass

² fully tempered laminated glass

Accessories

		code
	Cover cap, (1 piece)	chromium finish 16690
		raw 16691
	Additional top lock	16491
	Short connecting rod for door height up to 2500 mm ($8'2 \frac{7}{16}$ ")	14164
	Long connecting rod for door height over 2500 mm ($8'2 \frac{7}{16}$ ")	14165
	Guide, rattle proof, plastic, 14 mm ($\frac{9}{16}$ "), with suspension block	13781
	Brush seal 2,6/18 x 920 mm ($\frac{1}{8}$ / $\frac{23}{32}$ x $3' \frac{7}{32}$ ") or glass suspension and retainer profile	16797
	Fork spanner to glass holder insert	13817
	Installation tool for blocking keys 10–12,7 mm ($\frac{13}{32}$ – $\frac{1}{2}$ ") glass	13710
	Drilling jig, for hinge retention bolts	16979

Additional top lock and services

Details: \rightarrow HAWA-Variofold 80/GV.

Order specifications

- Quantity and type of sets
- Length of top track
- Length of bottom guide channel
- Width and height of glass
- Thickness of glass
- Quantity and type of cover caps
- Quantity and type of bottom guides
- Layout sketch
-

Optional order specifications

- Quantity of additional top lock
- Quantity and type of connecting rod
- Quantity of drilling jig, for hinge retention bolts
- Quantity and type of tool for glazing
- Quantity of brush profile

Planning/installation

For planning and installation purposes, please use the following installation drawing code 16825.

(\rightarrow www.hawa.ch \rightarrow HAWA-Productfinder)